

You are standing now at the orange Aum. Eighty feet to the North you can see the Svayambhu Lingam on which Lord Siva sat in Gurudeva's 1975 vision which was the seed for Iraivan Temple. I Wayan Marya, a Balinese artist, shows the Wailua River flowing below the completed Iraivan Temple, which is surrounded by waterways, lotus ponds, sacred forests, shrines and sacred images of Ganesha, Dakshinamurthi, Hanuman, Murugan's Shakti Vel and black granite statues of the Nandinatha Guru Paramparai.





## SIVADARSHANA VANAM\* : THE VISIONS, THE ARTISTS & THE ART



Shown here at a weekly havana he conducted to empower Iraivan Temple, Satguru Sivaya Subramuniyaswami (Gurudeva, 1927–2001) is the illumined soul who established this sanctuary and enriched uncounted lives. He was a shining example of awakening and wisdom, recognized worldwide as one of Hinduism's foremost masters. His prodigious genius, flare and inspiration permeate this spiritual oasis and continue to guide the lives of the men he trained and initiated. To devotees everywhere, the graceful, six-foot-two, white-haired guru was the embodiment of Lord Siva Himself. In the early hours of February 15, 1975, lying on a tatami mat in his Ryokan room, Gurudeva was having one of those profound sleeps that is neither awake nor full of dreams. In that clear space above physical consciousness, the 48-year-old satguru experienced a threefold vision that would be the spiritual birth of the great Saiva citadel called Iraivan Temple and its surrounding San Marga Sanctuary. Here is how he would later describe that morning to his monks:

"I saw Lord Siva walking in the meadow near the Wailua River. His face was looking into mine. Then He was seated upon a great stone. I was seated on His left side. This



was the vision. It became more vivid as the years passed. Upon reentering Earthly consciousness, I felt certain that the great stone was somewhere on our monastery land and set about to find it. Guided from within by my satguru, I hired a bulldozer and instructed the driver to follow me as I walked to the north edge of the property that was then a tangle of buffalo grass and wild guava. I hacked my way through the jungle southward as the bulldozer cut a path behind me. After almost half a mile, I sat down to rest near a small tree. Though there was no wind, suddenly the tree's leaves shimmered as if in the excitement of communication. I said to the tree, 'What is your message?' In reply, my attention was directed to a spot just to the right of where I was sitting. When I pulled back the tall grass, there was a large rock—the self-created Lingam on which Lord Siva had sat. A stunningly potent vibration was felt. The bulldozer's trail now led exactly to the sacred stone, surrounded by five smaller boulders. San Marga, the 'straight or pure path' to God, had been created. An inner voice proclaimed, 'This is the place where the world will come to pray.' San Marga symbolizes each soul's journey to liberation through union with God."

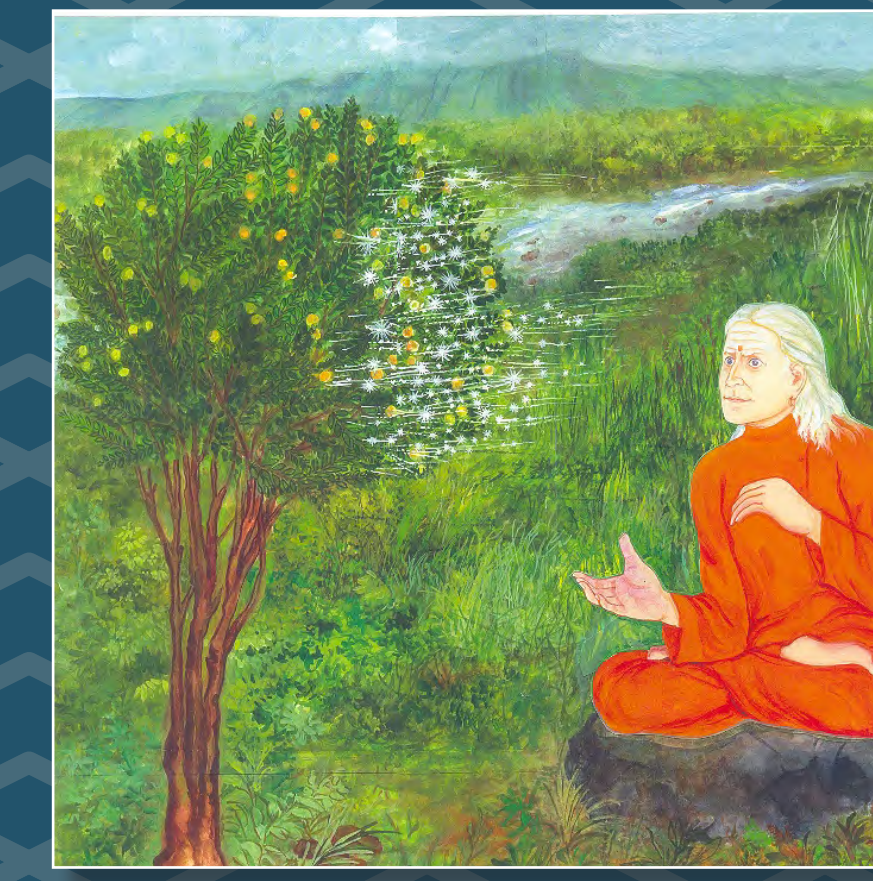


Since that day, pujas have been held daily at that sacred spot (the cluster of boulders you can see just to the north). Our master builder, Selvanathan Sthapati, has designed an open pavilion which one day will be built on the site to shelter the stones. The roof will consist of nine panels, each nine feet square. On them will appear nine works of art capturing the various visions Gurudeva had as the temple came to life on Kauai. Until that day, monks and devotees have built these three Chola-style exhibition displays from clear California redwood so you might touch what one visitor called "the source of envisionment."



The artist, S. Suresh Kumar, popularly known as Suresh Muthukulam, the sixth and youngest child of K. Sukumaran and Pulamaja, was born in 1971 in the Central Travancore hamlet of Muthukulam in the Alappuzha district. He lives in Kerala with his wife and two children and has become one of India's leading masters. In 2008, Sadasivanathaswami met the artist in Trivandrum and commissioned him to execute nine canvases in traditional Kerala style, each four feet square, using the styles and color palette he had spent years learning from his guru.

### ART PROCESS IN THE INTERNET AGE



To begin, the monks made a simple pencil sketch of each piece of art, scanned and emailed it to artist A. Manivelu in Chennai, Tamil Nadu. He executed a more detailed color version. Here is Manivelu's rendition of the dancing wild guava tree communicating to Gurudeva.



A scan of Manivelu's color rendition was emailed to artist Suresh in Kerala. He submitted his own full-size drawing, which was then edited by the swamis in Hawaii. Then Suresh went to work completing the giant artwork. Each piece was more amazing and charming than the last. He fedexed the oversized canvases to Kauai where they were scanned, then printed, mounted and laminated by BigPosters.com. One day we will print (on canvas) nine-foot-square panels of each and install them on the ceiling of the 16-pillared Svayambhu Lingam Mandapam for future pilgrims to explore.



**1.** This is the artist's initial sketch for the first part of the vision, where Lord Siva peers into the face of Gurudeva. His face perfect in every way, and the top of His head disappearing into Pure White Light.



**4.** Seeking the site of the vision, Gurudeva hires a bulldozer and cuts through the dense wild guava, guided inwardly. Amazingly, the path he made is perfectly straight, as though done by a surveyor.



**7.** The seventh painting will show Gurudeva's dream of a perfect crystal Lingam sitting in the Iraivan sanctum and his mystical discovery of that same crystal in Arkansas in 1987. It will one day be installed as the temple murti.



**2.** As the vision unfolds, Lord Siva is seen seated on a large boulder. His back toward Gurudeva. He lifts his ruddy hair to reveal the back of His neck, telling Gurudeva, "This is the source of my power."



**5.** The artist's interpretation of the guava tree that told Gurudeva where to look. It is literally dancing. Note the mountains as flames, the river flowing above and the hidden stones near the base of the tree.



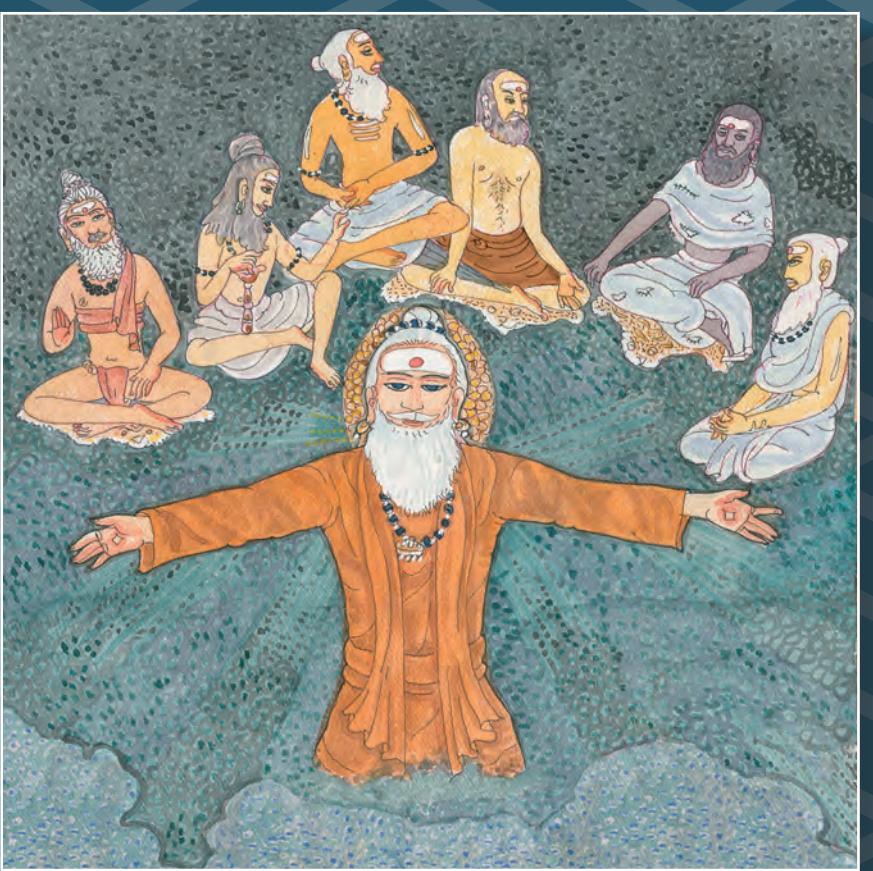
**8.** Once the seed was sown, the architect designed the Agamic temple and the silpi artisans went to work. This painting will show Iraivan Temple complete and depict the various stages of stone marking, carving and chisel sharpening.



**3.** Then Siva is walking in the meadow bordering the Wailua River, blessing devotees. The artist depicts the volcanic mountains as fire. Above, egret birds follow their daily migration to and from Mount Waialeale.



**6.** Gurudeva parts the grass, discovering the natural Sivalingam. The tree celebrates along with the devas above. The moon's lingam and the boulder's lingam intimate the all-pervasiveness of Siva, the All in all.



**9.** Here, artist Suresh will depict Gurudeva's spiritual lineage, the Nandinatha Sampradaya. Founded in Saiva Siddhanta, it is a lineage of monistic theism, an all-embracing Agamic philosophy which equally values temple worship and yoga.

\* Sivadarshana Vanam means "the forest where Lord Siva was seen" and is the name of this exhibition display.



## A BRIEF OVERVIEW & PHOTO GALLERY OF IRAIVAN TEMPLE



Here you stand, with the majestic Mount Waialeale in the background and Iraivan Temple a few hundred feet away. This is the crown jewel of Kauai's Hindu Monastery. It is being constructed, first and foremost, as a destination for devotees on pilgrimage. Now is a highly auspicious time to be here, for the temple is actually being created in your presence.



For twenty years there has been a steady chip, chip, chip of hammers and chisels in the hands of scores of artisans from India, shaping the 3,000 blocks of stone for the temple. One team in India does the major sculpting and ornamentation, and a smaller team living on Kauai, usually six, assembles and fits the stones.



Remarkably, the artisans use just two tools for this: a mild steel chisel and a bamboo-handled mallet. It was Gurudeva's vision to have this temple built completely by hand, without modern grinders and diamond saw blades. Today, our site in Bangalore is the only one left in India that can carve a temple completely by hand. This may well be the last Hindu temple ever built in the old way.



The main structure, completed in 2010, took twenty years to carve and ten years to assemble. It is carved from one of the hardest stones in the world, white granite, with a few elements in black granite, including the four central Tara pillars and the steps to the sanctum. Marvels include a stone bell that actually rings, giant stone chains and a time capsule crypt holding copper plates.

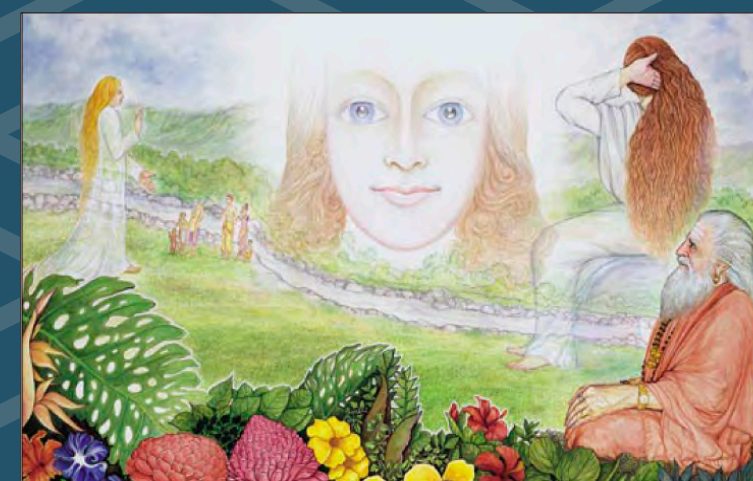


The giant sphatika (quartz crystal) Sivalingam will be installed in the sanctum. Its massive avudaiyar, the bronze base shown above during its construction in South India, weighs over 10,000 pounds and is the largest made in modern times. Also coming from India are a giant Hanuman, massive stone elephants and a charming Nandi who will grace the entrance.

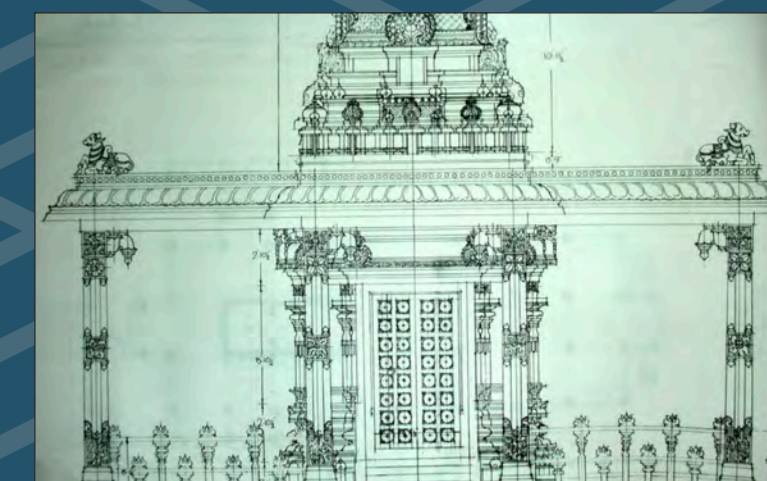


Since 2001 Satguru Bodhinatha Veylanswami has guided the project. All of the monks work in concert to see Gurudeva's vision manifest: an Agamic edifice that can connect the Divine and the material, the spirit and the body, Heaven and Earth, a place of tropical beauty and serenity where every detail, every sacred, hand-crafted particle of granite conspires to bring you closer to God within. Aum Namah Sivaya!

**February 15, 1975**  
Temple founder Gurudeva has vision of Lord Siva



**Decade of the 80s**  
Master architects design temple in pure Chola style



**December 21, 1990**  
Gurudeva and swamis chip first stone in India



**1990-1992**  
We build a full village in Bangalore for 75 families



**1992 Onward**  
Millions of pounds of granite are quarried from mountain



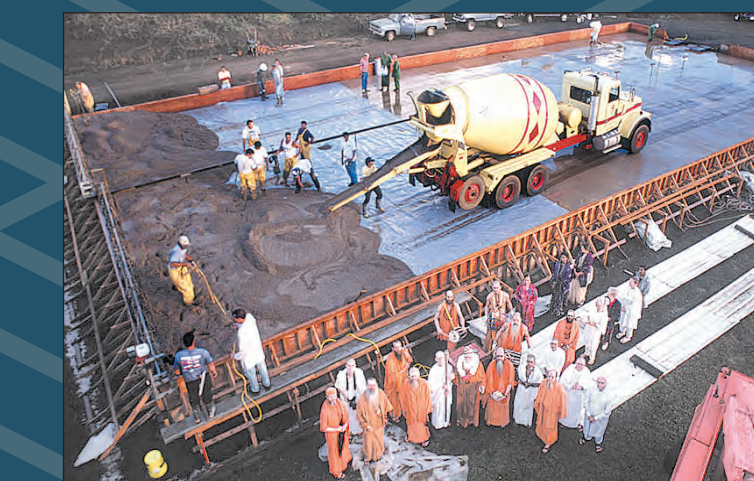
**1993-2012**  
Craftsmen spend hundreds of man years carving by hand



**1994-1995**  
Site is excavated, ground-breaking puja held April 4-5



**August, 1999**  
108 cement trucks pour high-tech foundation



**2001-2002**  
Pillars carved, more containers shipped to Kauai



**May 28, 2001**  
Seven Indian sculptors arrive on Kauai to assemble stones



**May 31, 2001**  
First sanctum stones are ritually placed on foundation



**2001-2003**  
33 courses of sanctum stones fitted, pillars begun



**2002-2005**  
Scores of containers arrive from India, laden with granite



**2006-2011**  
Main temple is assembled, roof, gold-leafing completed



**2012-2016**  
Nandi Mandapam, plinth, landscaping & perimeter wall



**2017**  
America's first all-granite temple will be consecrated








At rest in his quarters, Gurudeva saw the full and perfect face of God Siva, who was looking lovingly into his eyes.





As the vision unfolds, Lord Siva is seen seated on the Svayambhu Lingam. Lifting the hair to reveal the nape of His neck, He tells Gurudeva, "This is the source of my power."





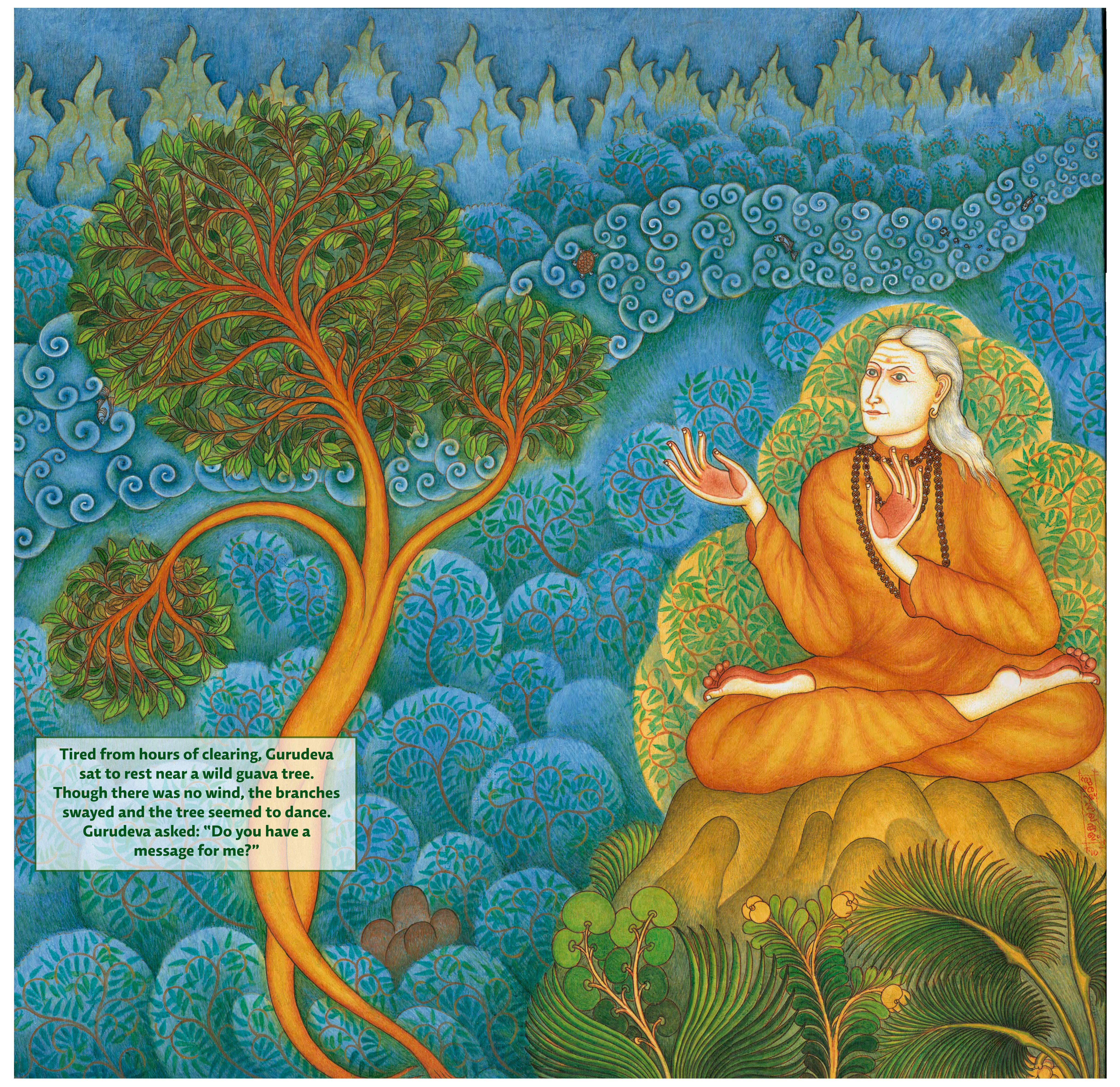
Still in his quarters, Gurudeva inwardly sees the gracious form of Lord Siva walking in white robes in the meadow near the Wailua River, blessing devotees.



**Machete in hand, Gurudeva leads  
a bulldozer through the jungle  
thicket and over waterways,  
guided mysteriously to the site  
of his early-morning vision.**







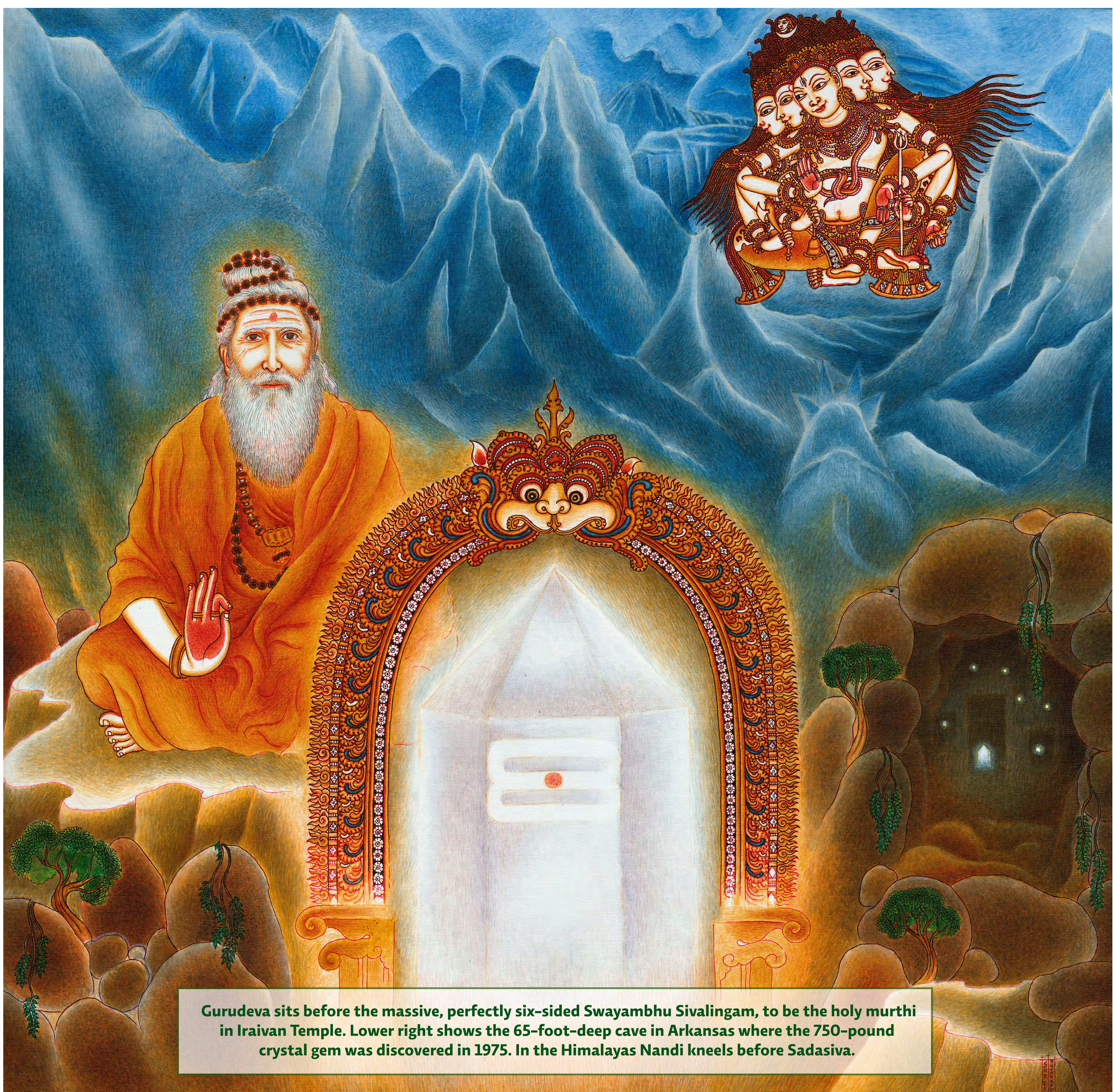
Tired from hours of clearing, Gurudeva  
sat to rest near a wild guava tree.  
Though there was no wind, the branches  
swayed and the tree seemed to dance.  
Gurudeva asked: "Do you have a  
message for me?"





With the Wailua River flowing behind him, Gurudeva intuitively parts the high grass, discovering the hidden Svayambhu Sivalingam, surrounded by other boulders.





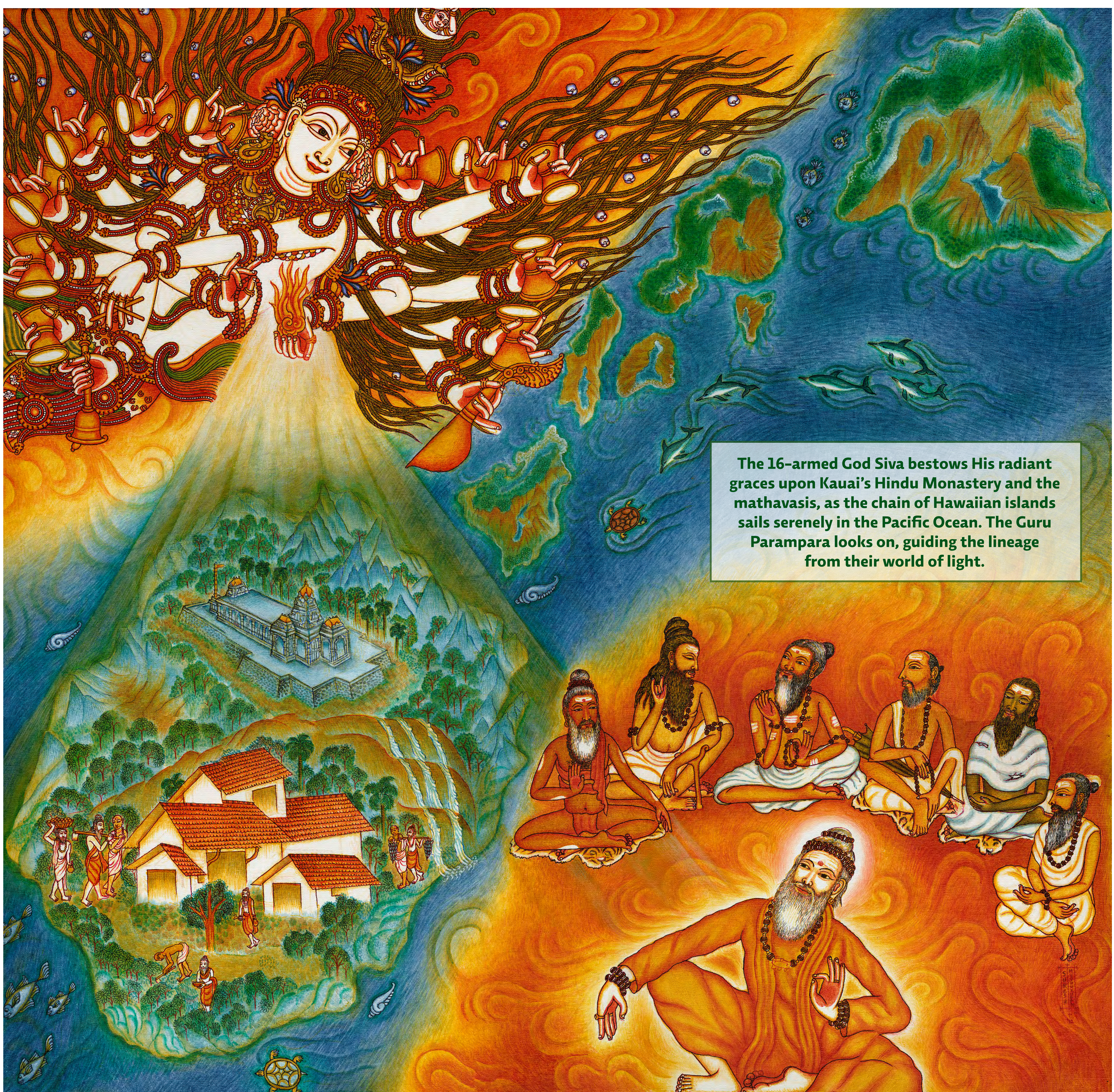
**Gurudeva sits before the massive, perfectly six-sided Swayambhu Sivalingam, to be the holy murthi in Iraivan Temple. Lower right shows the 65-foot-deep cave in Arkansas where the 750-pound crystal gem was discovered in 1975. In the Himalayas Nandi kneels before Sadasiva.**





With the moon as His boat, Siva blesses Iraivan Temple and its creators: Gurudeva, Master Architect V. Ganapati Sthapathi and the silpi craftsmen who carved it to perfection.





The 16-armed God Siva bestows His radiant graces upon Kauai's Hindu Monastery and the mathavasis, as the chain of Hawaiian islands sails serenely in the Pacific Ocean. The Guru Parampara looks on, guiding the lineage from their world of light.